

ANNADALE

CRAFTSMAN (B)



TRADITIONAL (A)




BRIGHTON HOMES

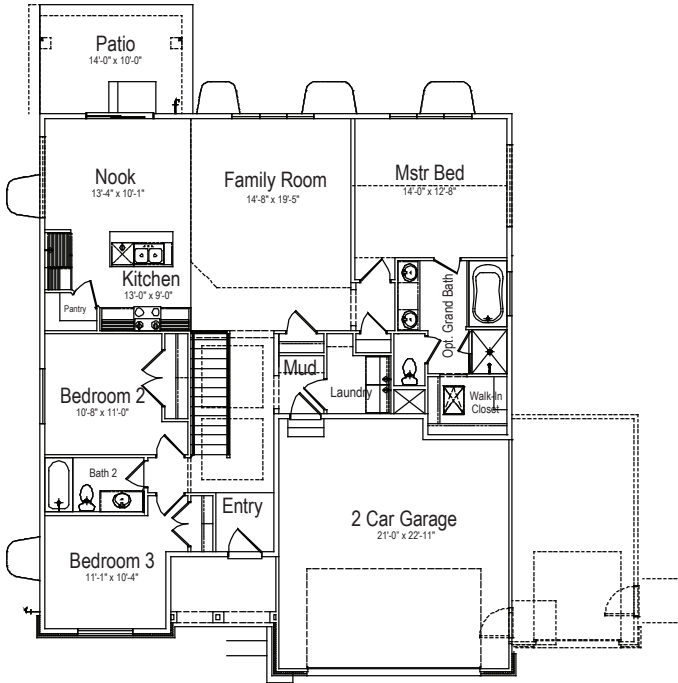
www.brightonhomes-utah.com

Sales: (801)-299-1700

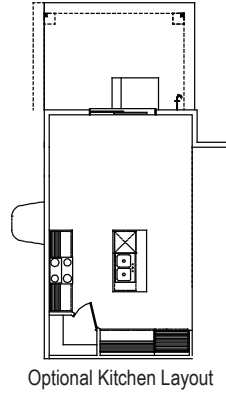


Disclaimer: Actual models may differ from the images shown here. Optional items not included in base price may be shown. Speak with a Brighton Homes Representative for additional information. Areas and dimensions are approximate.

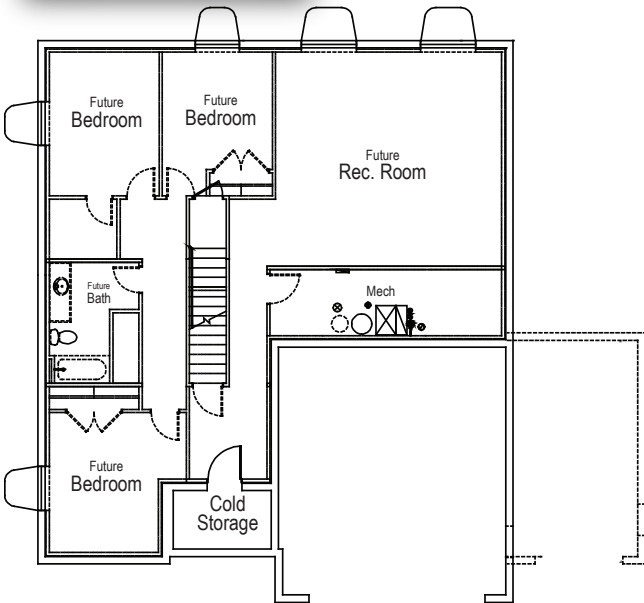
ANNADALE



Finished Square Feet: 1573
 Total Square Feet: 3201
 Bedrooms: 3 - 6
 Bathrooms: 2 - 3
 Garage: 2 Car With Optional 3rd
 Levels: 1 Floor + Basement



Main Level Floor Plan



Basement Floor Plan



www.brightonhomes-utah.com

Sales: (801)-299-1700



Disclaimer: Actual models may differ from the images shown here. Optional items not included in base price may be shown. Speak with a Brighton Homes Representative for additional information. Areas and dimensions are approximate.