

EDGEWOOD A - LOT 4



EDGEWOOD - LOT 4 INCLUDED FEATURES

Structural & Exterior

- Professionally designed color selections
- Floor truss system to avoid drops
- Home warranty
 - One-year whole home coverage
 - Ten-year structural coverage
- Brick, Hardie, and lap siding
- 2x6 exterior wall framing
- basement entrance or walk-out basement (varies by lot)

Interior

- Gas fireplace in the main living area
- 3 car garage
- Gourmet Kitchen with double ovens, hood over cooktop
 - 9' Ceilings on main floor, 9' basement walls
 - LG appliances
- Premium elongated toilets
- Master Bathroom with a separate soaking tub and shower

Mechanical/Electrical

- 96% Efficient furnace in basement and level 2
- Low-E double pane windows
- Rheem's 50 gallon electric water heater
- (2) 14 SEER AC systems
- Flush mount LED lighting throughout
- Decora light switches
- Ceiling fan roughs throughout
- Garage door openers with Key pads
- EV Outlet: 220V pre-wire
- Media Bundle: Data, 2 USB & USB-C Plugs

Finishes

Includes a professionally designed base package, with the ability to add upgrades with help from our design team.

Kitchen

- White HDF cabinets, 42" tall, with soft-close doors & drawers
- Cabinet hardware included
- Drawer bank, lazy susan, and garbage pull-out
- White subway tile backsplash
- 3cm upgraded quartz countertops
- Stainless steel single-basin sink
- Delta Level 2 kitchen faucet
- Gourmet kitchen with LG appliances: cooktop, double oven, dishwasher, hood, and microwave

Bathrooms

- Cultured marble shower surrounds
- Frameless shower glass in master bath
- Soaker tub in master bath
- Emser tile flooring in master and secondary baths
- Delta Level 2 bathroom faucets
- Elongated toilets

Flooring

- Coretec luxury vinyl plank in main living areas and powder baths
- Shaw carpet in bedrooms
- Emser tile in master and secondary baths

Laundry

- Sink base cabinet with countertop
- Stainless steel sink
- Delta laundry faucet with Emser tile flooring

Trim

- 8' tall doors on first floor
- 5" baseboards

Electrical

- Bidet outlet and pantry outlet
- Upgraded light fixtures throughout
- Ceiling fan and island pendant rough-ins



(801)-299-1700



Sales@BuildWithBrighton.com



295 E 2050 S, Bountiful, UT

EDGEWOOD A - LOT 4



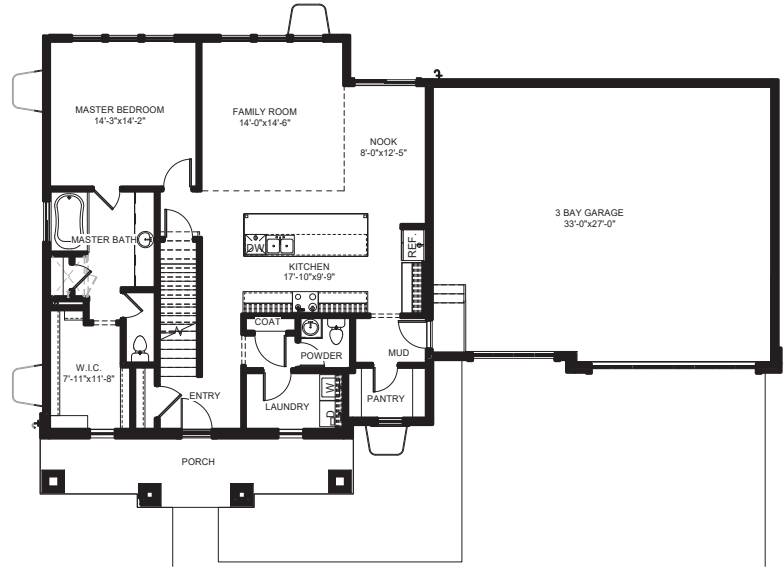
***landscaping not included with purchase of home**

Square Footage

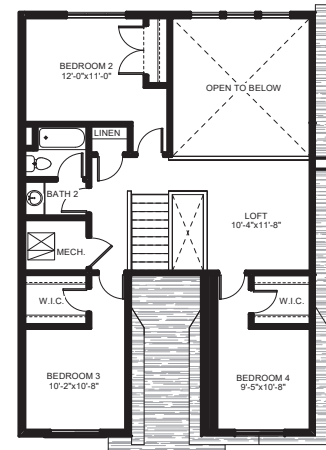
Finished - 2286 Square Feet
Unfinished Basement - 1583 Square Feet

Total - 3869 Square Feet

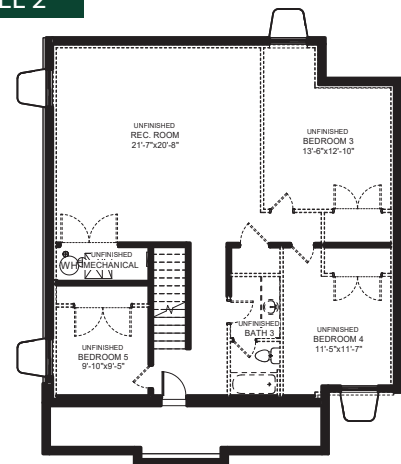
Garage - 922 Square Feet



LEVEL 1



LEVEL 2



BASEMENT



3-7



2.5-3.5

Disclaimer: Actual models may differ from the images shown here.
Optional items not included in base price may be shown.
Speak with a Brighton Homes Representative for additional information.
Areas and dimensions are approximate.