

FAIRMONT - LOT 1



FAIRMONT - LOT 1 INCLUDED FEATURES

Structural & Exterior

- Professionally designed color selections
- Floor truss system to avoid drops
- Home warranty
 - One-year whole home coverage
 - Ten-year structural coverage
- Hardie lap siding, board and batton, and Stucco
- 2x6 exterior wall framing
- basement entrance or walk-out basement (varies by lot)

Interior

- Gas fireplace in the main living area
- 3 car garage
- Gourmet Kitchen with double ovens, hood over cooktop
 - 9' Ceilings on main floor, 9' basement walls
- LG appliances
- Premium elongated toilets
- Master Bathroom with a separate soaking tub and shower

Mechanical/Electrical

- 96% Efficient furnace in basement and level 2
- Low-E double pane windows
- Rheem's 50 gallon electric water heater
- (2) 14 SEER AC systems
- Flush mount LED lighting throughout
- Decora light switches
- Ceiling fan roughs throughout
- Garage door openers with Keypads
- EV Outlet: 220V pre-wire
- Media Bundle: Data, 2 USB & USB-C Plugs

Finishes

Designer Selected Features

This home has been professionally designed with curated finishes and fixtures. All selections are final and have been chosen for both style and function.

Kitchen

- Shaker cabinets in painted HDF Snow-bound and Laminate Talas Cherry with stacked uppers to the ceiling
- Soft-close doors and drawers with tray divider, lazy susan, and garbage pull-out
- Honey bronze cabinet hardware
- Arizona Tile Biancaone 6 cm mitered countertops
- Emser tile backsplash
- Farmhouse-style fireclay single-basin sink
- Delta faucet in champagne bronze
- Premium stainless steel appliance package including gas cooktop, double oven, dishwasher, hood, and microwave

Bathrooms

- Shaker-style vanities with Arizona Tile countertops
- Emser tile shower walls and mosaic shower floor in master bath
- Garden tub in master bath
- Frameless shower glass in master bath
- Porcelain tub with tile surround in secondary bath

- Delta faucets and bath hardware in champagne bronze
- Elongated toilets

Flooring

- 9" Coretec luxury vinyl plank in main living areas and powder bath
- Shaw carpet in bedrooms, stairs, and loft
- Emser tile in master bath, secondary bath, laundry, and powder bath

Laundry

- Shaker cabinet base with honey bronze hardware
- Arizona Tile Linen countertop with stainless steel sink
- Delta laundry faucet in champagne bronze
- Emser tile flooring

Fireplace

- Gas fireplace with wood mantel and precast surround

Trim

- Masonite Livingston 3-panel interior doors (8' first floor, 6'8" second floor)
- Satin brass door hardware
- Mitered casing and 5" block baseboards
- Black horizontal metal stair railing

Electrical & Lighting

- LED recessed lighting throughout
- Designer selected vanity lights and pendants
- Ceiling fan rough-ins
- Outdoor wall lighting



(801)-299-1700

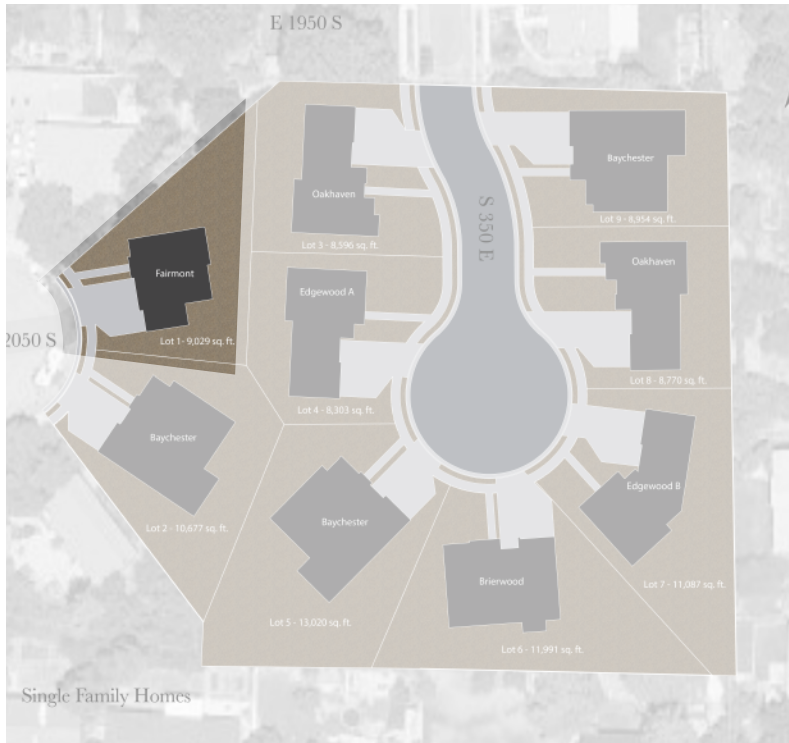


Sales@BuildWithBrighton.com



295 E 2050 S, Bountiful, UT

FAIRMONT - LOT 1



***landscaping not included with purchase of home**

Square Footage

Finished - 2363 Square Feet
Unfinished Basement - 1215 Square Feet

Total - 3578 Square Feet

Garage - 768 Square Feet

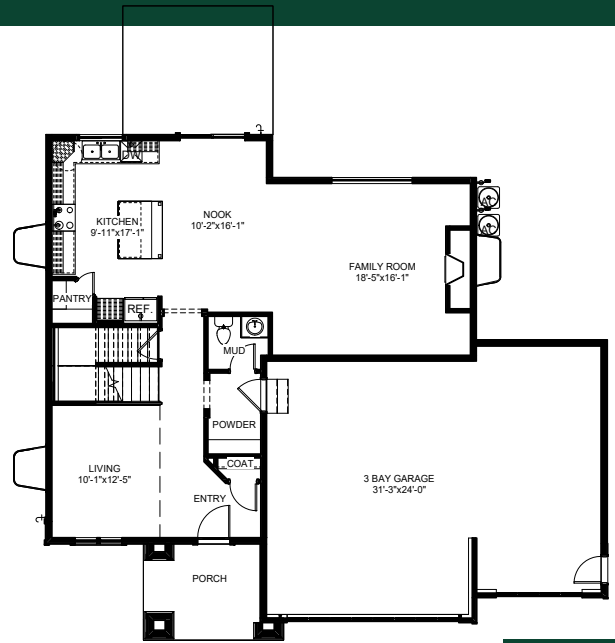


3-5

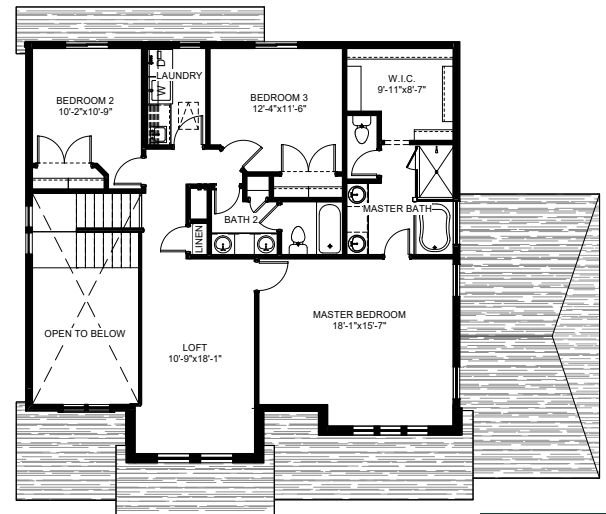


2.5-3.5

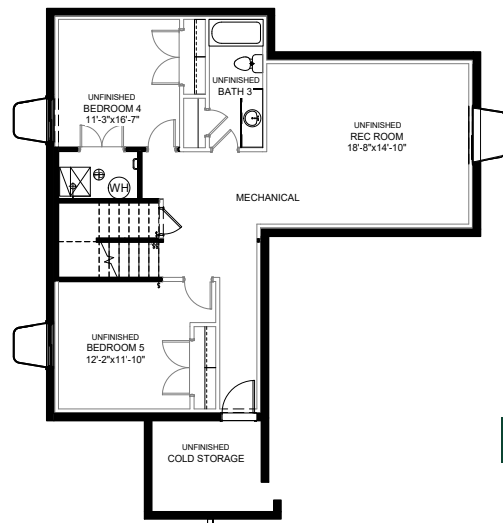
Disclaimer: Actual models may differ from the images shown here.
Optional items not included in base price may be shown.
Speak with a Brighton Homes Representative for additional information.
Areas and dimensions are approximate.



LEVEL 1



LEVEL 2



BASEMENT